

*Adult Day Care Center of Las Vegas*  
901 N. Jones Boulevard  
Las Vegas, NV 89108  
702.648.3425  
Fax: 702.648.1408



*Adult Day Care Center of Henderson*  
1201 Nevada State Drive  
Henderson, NV 89002  
702.368.2273  
Fax: 702.243.2273



## ***HENDERSON MONTHLY NEWSLETTER*** ***MAY 2011***

May is National Older Americans and Smile Month. You can change the world with a smile. When you smile the world smiles back at you. When you enter our doors at The Adult Day Care Center of Henderson (ADCCH), you will be greeted with open arms, and smiles from our hearts. Our Henderson Center responds to the important mission of supporting senior citizens in their efforts to remain independent, with dignity in the community. The atmosphere at our Center will be joyful and loving as we continue to offer an array of fun activities, which our participants enjoy, including: A daily exercise program, Tai Chi, Music Therapy, Organic Gardening, Bingo competitions, Arts & Crafts and live entertainment in the afternoons. Please join us in celebrating the vibrant colors of the season's flowers and green plants, as we smile our way through MAY.



### **HIGHLIGHTS FROM APRIL**

April was all about new growth. Our garden is growing and we are expanding it with more vegetables and herbs. Our photo (Guess Who?) gallery is growing, and it has been a big hit with our seniors and staff. Our senior art gallery is growing as well. The arts and craft classes have been busy painting making unique recycled mosaics home decorations. Drumming with Jeff has been simply marvelous, more of our seniors are participating and the room is filled with laughter and music. The warmer weather invites our seniors to stroll outside and play Shuffle Board. It's been quite nice to see!!

### **NEW ARRIVALS**

We are pleased to welcome the new participants who became a part our Center family in April: Carl K, Frances V, Franklin S, and Roger T.

### **CLOSURES**

The Adult Day Care Center of Henderson will be closed on the following date: Monday, May 30th 2011

### **GET PLUGGED IN!**

There's an amazing state-of-the-arts computer lab here at our Center, Located in the library Quiet Room, next to the Arts & crafts department. The software suits all your needs with its vast technology.

### **DID YOU KNOW?**

In theory the first day of spring, the vernal equinox, is supposed to have exactly 12 hours of sun and 12 hours of darkness, but it never usually works out that way.





## **EVENTS IN MAY**

We would like everyone to join us for Tai Chi on Tuesdays and Thursdays at 10:00am, and Move & Groove to Drumming Jeff @ 2:00pm on Thursdays. We have started our Brain Dancing on Tuesdays and Karaoke Fridays have been a lot of fun. Our weekly Trivia game has also been a big hit with our seniors and staff. Caregivers are invited. Please don't forget to submit your recipes. See attached flyer for details. Be on the look-out for some surprise events throughout the month. If these are not your regularly scheduled days, we'd still love to see you here.

## **GETTING SCENT-IMENTAL**

A new aromatherapy scent, sandalwood, a purifying and protective scent that matches the purity of spring, will be the aromatic of choice as we continue our aromatherapy series.

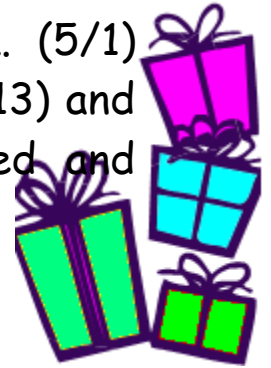
## **SEE WHAT'S IN BLOOM!**

We are still planting our new spice garden at our Center. Our seniors will start taking a weekly stroll through the garden to see the fruits of their labor.



## HAPPY BIRTHDAY

Our birthday party will be held on the 3rd Wednesday of the month, May 25th, 2011. Our May celebrants are Viola K. (5/1) Elaine L. (5/1) Wayne A. (5/2) Carl K. (5/7) Jay A. (5/13) and Robyn Becker (5/22). Entertainment will be provided and birthday treats will be served as well.



## SUPPORT GROUP

We have started an evening support group on the 1<sup>st</sup> Wednesday of every month please see attached flyer for more details on caregiver support programs and community forums.



# THANK YOU!

On behalf of our entire family of helpful, caring professionals here at Adult Day Care Center of Henderson, we would like to thank you for continually being an important and appreciated part of our Center. As we continue to strive to make our Center a place of caring and fun for all our participants, always remember our doors are always open to you and your family members needs. Thank you for choosing us!

Dee Dee Woodberry

*Activities Director*



## May Notes from ADCC Henderson Staff



### **Activities Are In Full Swing:**

Spring is here, wind and all! As many of you know, we had a “planting” day on April 28<sup>th</sup>. Our thanks to all who came out to “get dirty” with us and helped with the planting. We hope that our plants will add color to our patio and other spaces.

The “wish list” in the front lobby is becoming shorter thanks to all the donations received. If any of you have a craft idea that you feel your loved one may enjoy sharing, please let me know so that it can be added to our repertoire.

Genna



### **Advice from the Senior Care Aides**

As the number of people attending the center continues to grow, please remind your loved ones to use their walkers or canes as needed. We don't want anyone to fall or to hurt themselves in any way. If their cane or walker has been moved in order to make for safer walkways for others, we will be happy to retrieve those items when asked.

Carla, Danielle, Kera, Sean

### **Comments from the Cooks:**

Spring offers the opportunity for each of us to try lighter dishes, like salads. These lighter dishes can taste good and help each of us maintain better health, especially weight. There is a recipe included in each newsletter. Please take the time to review these dishes and try any of them that sound good to you. Each of these recipes was suggested by another client or family member attending ADC.

Pat, Rolf and Susie



### **Notes from Nursing:**

We all enjoy napping! Studies now show that a short nap during the day can actually be beneficial and relieve some the stress of care giving. Even 30 minutes of relaxation can be beneficial. Take the time to be good to yourself. Relax!

Christina and LaPrele

### **Remarks from the Receptionist:**

My continued thanks to each of you concerned about my health. I am tentatively scheduled for back surgery on May 9<sup>th</sup>. It is anticipated that I will be off work for approximately 6 weeks. My heartfelt thanks for all your prayers, I will look forward to seeing each of you when I return.

Jenny

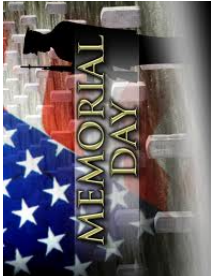




### **Sentences from the Social Worker:**

It is thought that by the year 2010, each of us will know at least one person that suffers from dementia. The following website was given to me by caregiver Linda Tannenbaum & shows a simple test that may help determine if someone you know has dementia. Please feel free to share the information with people you know. <http://www.pyroenergen.com/articles11/dementia-alzheimers.htm>

Kay & All ADCC Staff

**ACTIVITY CALENDAR      ADULT DAY CARE CENTER OF HENDERSON      MAY 2011      FRIDAY**

MONDAY	TUESDAY	WEDNESDAY	THURSDAY	FRIDAY
<p>2) 9:00 Current Events 9:30 Exercise 10:00 <b>Arts &amp; Crafts</b> 12:30 Trivia 1:00 <b>DANNY ROSE</b> 3:00 Bingo</p>	<p>3) <b>* HUG DAY *</b> 9:00 Current Events 9:30 Exercise 10:00 <b>TAI CHI / A&amp;C</b> 12:30 Sing-A-Long 1:00 <b>BRAIN DANCE</b> 3:00 Bingo</p>	<p>4) <b>MUSIC THERAPY</b> 9:00 Current Events 9:30 Exercise 10:00 <b>Arts &amp; Crafts</b> 12:30 Trivia 1:00 <b>MARK MILLER</b> 3:00 Bingo</p>	<p>5) 9:00 Current Events 9:30 Exercise 10:00 <b>TAI CHI / A&amp;C</b> 12:30 Word Scramble 2:00 <b>DRUMMING JEFF</b> 3:00 Bingo <b>*CINCO DE MAYO*</b></p>	<p>6) <b>*OBSER. MOTHER'S DAY* 6)</b> 9:00 Current Events 9:30 Exercise 10:00 <b>Arts &amp; Crafts / Spa</b> 12:30 Trivia 1:00 <b>JAPANESE DANCERS</b> 3:00 Bingo</p>
<p>9) 9:00 Current Events 9:30 Exercise 10:00 <b>Arts &amp; Crafts</b> 12:30 Trivia 1:00 <b>BRIAN O' SHEA</b> 3:00 Bingo <b>*SHARE A SMILE*</b></p>	<p>10) <b>TOOTH BRUSH DAY</b> 9:00 Current Events 9:30 Exercise 10:00 <b>TAI CHI / A&amp;C</b> 12:30 Sing-A-Long 1:00 <b>J&amp;J SINGING TEAM</b> 3:00 Bingo</p>	<p>11) <b>MUSIC THERAPY</b> 9:00 Current Events 9:30 Exercise 10:00 <b>Arts &amp; Crafts</b> 12:30 Trivia 1:00 <b>JENNY FORD</b> 3:00 Bingo</p>	<p>12) <b>HAPPY FEET DAY</b> 9:00 Current Events 9:30 Exercise 10:00 <b>TAI CHI / A&amp;C</b> 12:30 Word Scramble 2:00 <b>DRUMMING JEFF</b> 3:00 Bingo</p>	<p>13) 9:00 Current Events 9:30 Exercise 10:00 <b>Arts &amp; Crafts / Spa</b> 12:30 Trivia 1:00 <b>KARAOKE</b> 3:00 Bingo</p>
<p>16) 9:00 Current Events 9:30 Exercise 10:00 <b>Arts &amp; Crafts</b> 12:30 Ball Toss 1:00 <b>DANNY ROSE</b> 3:00 Bingo</p>	<p>17) 9:00 Current Events 9:30 Exercise 10:00 <b>TAI CHI / A&amp;C</b> 12:30 Sing-A-Long 1:00 <b>J&amp;J SINGING TEAM</b> 3:00 Bingo</p>	<p>18) <b>MUSIC THERAPY</b> 9:00 Current Events 9:30 Exercise 10:00 <b>Arts &amp; Crafts</b> 12:30 Birthday Trivia 1:00 <b>MARK MILLER</b> 3:00 Bingo</p>	<p>19) 9:00 Current Events 9:30 Exercise 10:00 <b>TAI CHI / A&amp;C</b> 12:30 Word Scramble 2:00 <b>DRUMMING JEFF</b> 3:00 Bingo <b>*LAUGHTER DAY*</b></p>	<p>20) <b>MAYFLOWER DAY</b> 9:00 Current Events 9:30 Exercise 10:00 <b>Arts &amp; Crafts / Spa</b> 12:30 Trivia 1:00 <b>KARAOKE</b> 3:00 Bingo</p>
<p>23) <b>FUN ART DAY</b> 9:00 Current Events 9:30 Exercise 10:00 <b>Arts &amp; Crafts</b> 12:30 Trivia 1:00 <b>BRIAN O' SHEA</b> 3:00 Bingo</p>	<p>24) 9:00 Current Events 9:30 Exercise 10:00 <b>TAI CHI / A&amp;C</b> 12:30 Sing-A-Long 1:00 <b>J&amp;J SINGING TEAM</b> 3:00 Bingo <b>*MAKE A FRIEND*</b></p>	<p>25) <b>MUSIC THERAPY</b> 9:00 Current Events 9:30 Exercise 10:00 <b>Arts &amp; Crafts</b> 12:30 Trivia 1:00 <b>JENNY FORD</b> 3:00 Bingo <b>*BIRTHDAY PARTY*</b></p>	<p>26) <b>* SMILE DAY *</b> 9:00 Current Events 9:30 Exercise 10:00 <b>TAI CHI / A&amp;C</b> 12:30 Word Scramble 2:00 <b>DRUMMING JEFF</b> 3:00 Bingo</p>	<p>27) 9:00 Current Events 9:30 Exercise 10:00 <b>Arts &amp; Crafts / Spa</b> 12:30 Trivia 1:00 <b>KARAOKE</b> 3:00 Bingo</p>
<p>30)  <b>MEMORIAL DAY</b> <b>CLOSED</b></p>	<p>31) 9:00 Current Events 9:30 Exercise 10:00 <b>TAI CHI / A&amp;C</b> 12:30 Sing-A-Long 1:00 <b>BRAIN DANCE</b> 3:00 Bingo</p>	<p><b>HAPPY BIRTHDAY</b> VIOLA K. 5/1 ELAINE L. WAYNE A. 5/2 CARL K. 5/7 JAY A. 5/13 ROBYN B. 5/22</p>		

# LUNCH MENU

MONDAY

# ADULT DAY CARE CENTER OF HENDERSON

TUESDAY

# ADULT DAY CARE CENTER OF HENDERSON




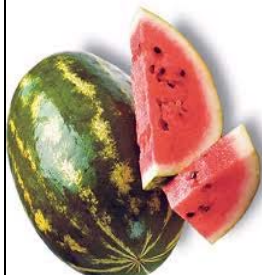
WEDNESDAY

# ADULT DAY CARE CENTER OF HENDERSON

THURSDAY

# MAY 2011

FRIDAY

<p>2) Turkey Veggie Soup Green Salad Cheese Pizza Chilled Peaches</p>	<p>3) Vegetable Beef Soup Turkey &amp; Cheese sandwich on wheat bread w/ lettuce Peas &amp; Carrots Applesauce</p>	<p>4) Cream of Veggie Soup Taco Salad w/ meat, cheese, lettuce and tomatoes Jell-O w/ Fruit</p>	<p>5) Chicken Noodle Soup Hamburger w/ cheese Lettuce &amp; tomato Potato Fries Pears <b>*CINCO DE MAYO*</b></p>	<p>6) Spinach Salad Roasted Turkey Stuffing w/ Gravy Green Beans Banana Pudding <b>*OBS. MOTHER'S DAY*</b></p>
<p>9) Green Salad Spaghetti w/ meat sauce Garlic Bread Yogurt w/Granola Watermelon</p>	<p>10) Cucumber Salad Meatloaf Mac &amp; Cheese Green Beans Watermelon</p>	<p>11) Green Salad Chicken Wings Oven Roasted Potatoes Peas &amp; Carrots Apricots</p>	<p>12) Turkey Chowder Fish Filet Sandwich w/ lettuce &amp; tomatoes French Fries Cole Slaw Honey Dew</p>	<p>13) Split Pea Soup Chicken Salad Sandwich 3 Bean Salad Potato Chips Jell-O w/ Fruit</p>
<p>16) Vegetable Soup Tuna Casserole Green Salad French Bread Orange Slices <b>*ICE CREAM DAY*</b></p>	<p>17) Gazpacho Soup Chicken Filet Sandwich Lettuce &amp; Tomato Potato Fries Jell-O w/ Fruit</p>	<p>18) Tomato Cucumber Salad Hot Tuna Melt On Wheat Bread Zucchini Strips Pears</p>	<p>19) Green Salad Beef Stew Corn Bread Yogurt w/ Granola <b>*COOKIE DAY*</b></p>	<p>20) Tomato Soup Grilled Ham &amp; Cheese Sandwich on wheat bread Zucchini Jell-O w/ Fruit</p>
<p>23) Beef Veggie Soup Chicken Strips Wild Rice Zucchini Salad Pears</p>	<p>24) Green Salad Baked Fish Potatoes Broccoli Florets Watermelon</p>	<p>25) Cucumber Salad Penne w/ Chicken &amp; Broccoli French Bread Jell-O w/ Fruit <b>*BIRTHDAY CAKE*</b></p>	<p>26) Vegetable Soup Philly Steak Sandwich Seasoned Potato Fries Green Salad Yogurt w/ Fruit</p>	<p>27) Asian Green Salad Sweet &amp; Sour Chicken on Rice Stir Fry Vegetables Honey Dew Melon <b>*POPCICLE DAY*</b></p>
<p>30)  <b>MEMORIAL DAY</b> A Time to Honor America's Heroes <b>CLOSED</b></p>	<p>31) Lentil Soup Homemade Meatloaf Potatoes Green &amp; Yellow Squash Cinnamon Apples</p>	<p>To: Our Awesome Kitchen Staff. </p>	<p> Thank You!</p>	<p></p>

# Recipe of the Month

Submitted by: Tracy J. (Age:45)



## Chicken & Cheese Enchiladas

### **Ingredients:**

1(10.75 ounce) can of Campbell's Condensed Cream of Chicken Soup  
½ cup sour cream  
1 cup Pace Picante Sauce  
2 tsp. chili powder  
2 cups chopped cooked chicken  
½ cup Monterey Jack cheese  
6 flower tortillas (6"), warmed  
1 small tomato, chopped  
1 green onion

### **Directions:**

Stir the soup, sour cream, picante sauce and chili powder in a medium bowl. Stir 1 cup picante sauce mixture, chicken and cheese in a large bowl. Divide the chicken mixture among the tortillas. Roll up the tortillas and place them seam side up in 11x8" shallow baking dish. Pour the remaining picante sauce mixture over the filled tortillas. Cover the baking dish. Bake at 350 degrees F. for 40 min. or until the enchiladas are hot and bubbling. Top with the tomato and onion.

**Attention: Cooks, Chefs,  
Food Enthusiasts!**



Seniors, Caregivers, Family and Friends!

# Please Submit Your Recipes!

We will publish one each month with our newsletter!  
In addition, we will publish a compilation of recipes with artwork next year!

All types of recipes welcomed – entrées, desserts, family traditions, you name it!

Please drop off your recipe with the front desk person, attention Jennifer or Dee Dee,  
at the Adult Day Care Center.

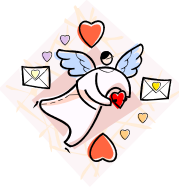
You may also email it to [admissions@nevadaseniorservices.org](mailto:admissions@nevadaseniorservices.org).



Adult Day Care Center of Las Vegas  
901 N. Jones Boulevard, Las Vegas, NV 89108 Phone: (702) 648-3425 Fax: (702) 648-1408

Adult Day Care Center of Henderson  
1201 Nevada State Drive, Henderson, NV 89002 Phone: (702) 368-CARE (2273) Fax: (702) 243-CARE (2273)

## ***“ANGEL FOOD” Their prices are heavenly!!!***



There are no restrictions, conditions or forms to fill out to purchase Angel Food. This organization purchases quality food in large quantities for substantial volume discounts. The food relief program is open to one and all. Anyone may purchase an unlimited number of boxes of Angel Food by placing an order with a local Angel Food host site. **ORDER ONLINE [www.angelfoodministries.com](http://www.angelfoodministries.com)**

Comparison shopping nationwide in various grocery stores has revealed that the average retail value of a \$31 Angel Food Box for the same food items would be approximately \$65. Generally, one box of Angel Food assists in feeding a family of four for about one week or a single senior citizen for almost a month. To better help families in need, Angel Food Ministries participates in the food stamp program.

**Food is available for pickup usually the last Saturday of the month. Orders must be purchased in advance around the 15<sup>th</sup> of the month. Credit cards may be used online; cash and food stamps may be used at one of the local locations. Call or go online for current information and menus (available in Spanish and English).**

### **Angel Food Ministries Las Vegas Locations:**

<b>Echoes of Faith Church</b>	1401 E. Washington, 89101	642-0011
<b>Home Word Bound</b>	3900 Cambridge St. 89119	985-6045 or 604.5690
<b>The Verve Foundation</b>	7850 Dean Martin Dr.# 503	425-3951
<b>Warm Springs Baptist Church</b>	2075 E. Warm Springs	361-7070
<b>Angel Food Ministries</b>	Toll Free Number	877-366-3646



# MAY 2011 MENU

## B2 - Bit O' Blessing Box

Quantities are limited. Make sure to order yours online today while supplies last!

- 2 lb. Gourmet Dining Beef or Chicken Stir Fry
- 3 lb. IQF Chicken Drumsticks
- 2 lb. Ham Chowder
- 1 lb. All Beef Smoked Sausage
- 1.5 lb. Boneless Pork Chops (4 x 6 oz.)
- 24 oz. French Fries
- 6 oz. Corn Bread Stuffing
- 6.9 oz. Beef or Chicken Flavored Rice & Vermicelli
- 5 ct. Flavored Instant Oatmeal
- 7.5 oz. Break-n-Bake Cookies

**\$22.00\***

## B4 - Fast & Flavorful Cuisine

Convenience meals great for seniors and people on the go!

- Roasted White Chicken
- Salisbury Steak and Gravy
- Fish Sticks
- Meatloaf and Gravy
- Swedish Meatballs
- Fettuccini Alfredo
- White Chicken and Gravy over Rice
- White Chicken Mexican
- White Chicken Tetrazzini
- Sweet and Sour Pulled Pork

**\$29.00\***

specific meal details can be found at [www.angelfoodministries.com](http://www.angelfoodministries.com)

## B6 - Just 4 Me After School Box

An assortment of child-friendly snacks. Great for after school or any time.

- 2 lb. Breaded Chicken Fingers
- 16 oz. Corn Dogs (2 x 8 oz. bags)
- 18 oz. Pizza Bites (3 x 6 oz. bags)
- 4 (2.8 oz.) Peanut Butter and Jelly Jamwich
- 2 (3 oz.) Grilled Cheese Sandwich
- 2 (4 oz.) Pocket Sandwich
- 2 (3.7 oz.) Twin Charbroiled Beef Sandwich w/Cheese (Twin Packs)
- 2 (3.7 oz.) Breaded Chicken Sandwich (Twin Packs)
- 2 (2.2 oz.) PBJ on Graham Wafers
- 1.3 lb. Fruit Medley
- 2 ea. 3.4 oz. Watermelon Italian Ice
- 2 ea. 3.2 oz. Raspberry Fruit Juice Sherbet

**\$25.00\***

## B8 - Just 4 Me After School Fruit and Veggie Box

- 3 Red Apples
- 3 Green Apples
- 3 Pears
- 3 Navel Oranges
- 1 Stalk, Sleeved Celery
- 1 lb. Mini Peeled Carrots
- 1 (6 pk.) Raisins
- 1 (12 oz.) Peanut Butter
- 1 (3 oz.) Dried Cranberries with Honey
- Roasted Almonds

**\$17.00\***

## B1 - Bread of Life Signature Box

Balanced nutrition and variety with enough food to help feed a family of four for about a week.

- 1.5 lb. New York Strip Steaks (Small Bone, 4 x 6 oz.)
- 2.5 lb. IQF Split Chicken Breasts (Resealable Bag)
- 2 lb. Gourmet Mac & Beef Entrée (5% More Beef!)
- 1.5 lb. Bone-In Pork Chops (4 x 6 oz.)
- 1.5 lb. Fully Cooked Meatballs
- 1.5 lb. Maple Flavored Breakfast Sausage Links (approx. 34 count)
- 1 lb. 100% Ground Turkey
- 1 lb. 100% Ground Chicken
- 1 lb. Garden Peas
- 1 lb. Green Beans
- 2 lb. Fresh Sweet Georgia Vidalia Onions
- 28 oz. Diced Tomatoes
- 1 lb. Seasoned Waffle Fries
- 1 lb. Pasta
- 1 lb. Long Grain Brown Rice
- 16 ct. Sweet Hawaiian Dinner Buns
- 32 oz. 2% Shelf-Stable Milk
- 1 Dozen Eggs
- 7.5 oz. Break-n-Bake Cookies

**\$35.00\***

## GLUTEN FREE!†

### B5 - Allergen Free Food Box

- 1 lb. Breaded Chicken Breast Nuggets
- 1 lb. Breaded Chicken Tenderloins
- 1 lb. Breaded Breast Fillet Patties
- 1 lb. Breaded Boneless Chicken Wings
- 1 lb. Breaded Cubed Steak

**\$25.00\***

†Please see our website for other allergen facts.

## B7 - Just 4 Me

### No Child Goes Without

"Blessing America's Children, one Box at a Time"

- 10 ct. Instant Oatmeal (2 x 5 ct. Boxes)
- 1 (7.5 oz.) Beans & Wieners
- 1 (7.5 oz.) Cheezy Mac 'N Cheese
- 1 (7.5 oz.) Mini Beef Ravioli
- 1 (7.5 oz.) Spaghetti and Mini Meatballs
- 1 (7.5 oz.) Noodle Rings & Chicken
- 1 (7.5 oz.) Cheezy Mac 'N Franks
- 7 Cereal Bowls (.75 oz. ea.)
- 1 Peanut Butter (12 oz.)
- 1 Grape Jelly (20 oz.)
- 2 Chunk Lite Tuna in Water (.5 oz.)
- 32 oz. Shelf-Stable 2% Milk
- 1 (6 pk.) Applesauce
- 5 Granola Bars (.25 oz. ea.)

**\$25.00\***

## NEW! B9 - Pastor Joe's Premium Box

Quantities are limited. Please order online early to ensure that you receive this wonderful box!

- 40 oz. Angus Sirloin Steaks (4 X 10 oz.)
- 1.5 lb. Large Breaded Butterfly Shrimp
- 2 lb. Angus Steak Burgers (4 x 8 oz.)
- 12 oz. Bag, Onion Rings
- 1 lb. Sliced Carrots
- 1 lb. Whole Kernel Corn
- 24 oz. Steak Fries
- 1 lb. Frozen Cauliflower Florets
- 1 lb. Green Peas

**\$55.00\***

## B3 - Bountiful Blessing Box

- 1.5 lb. New York Strip Steaks (Small Bone, 4 x 6 oz.)
- 1.5 lb. Lean Hamburger Steaks (4 x 6 oz.)
- 2.5 lb. IQF Split Chicken Breasts (Resealable Bag)
- 2 lb. Gourmet Mac & Beef Entrée (5% More Beef!)
- 2 lb. Gourmet Dining Shrimp Stir Fry
- 1.5 lb. Bone-In Pork Chops (4 x 6 oz.)
- 1.5 lb. Fully Cooked Meatballs
- 2 lb. All Meat Hot Dogs
- 1.5 lb. Maple Flavored Breakfast Sausage Links (approx. 34 count)
- 1 lb. 100% Ground Turkey
- 1 lb. 100% Ground Chicken
- 1 lb. Garden Peas
- 1 lb. Green Beans
- 1 lb. Corn
- 1 lb. Sugar Snap Peas and Carrots
- 2 lb. Fresh Sweet Georgia Vidalia Onions
- 28 oz. Diced Tomatoes
- 1 lb. Seasoned Waffle Fries
- 1 lb. Pasta
- 1 lb. Long Grain Brown Rice
- 16 ct. Sweet Hawaiian Dinner Buns
- 16 oz. Complete Pancake Mix (Just Add Water)
- 32 oz. 2% Shelf-Stable Milk
- 1 Dozen Eggs
- 7.5 oz. Break-n-Bake Cookies

**\$46.00\***

### S1 - MAY SPECIAL #1 **\$26.00\***

- 5 lb. NY Strip Steak Special
- 5 lb. Bone-In NY Strip Steaks (8 x 10 oz.)

### S2 - MAY SPECIAL #2 **\$25.00\***

- 6 lb. Memorial Day Grill Box
- 3 lb. Hamburger Patties (8 x 6 oz.)
- 3 lb. Seasoned Chicken Breasts (8 x 6 oz.) (4 Honey Mustard, 4 Italian)

### S3 - MAY SPECIAL #3 **\$24.00\***

- Premium Fresh Fruit and Veggie Box
- 1 head Sleeved Romaine Lettuce
- 2 lb. bag Fresh Sweet Georgia Vidalia Onions
- 1 pk. Grape Tomatoes
- 1 lb. Carrots
- 1 (5.5 oz. bag) Green Onions
- 2 Cucumbers
- 1 (6 oz. bag) Radishes
- 4 ea. Baking Potatoes
- 1 head Green Cabbage
- 1 Cantaloupe
- 1 Golden Ripe Pineapple
- 6 Lemons
- 4 Red Apples
- 4 Navel Oranges
- AFM Fruit and Veggie Recipe Sheet

\*all prices are plus sales tax where applicable

Angel Food Ministries Reserves the Right to Substitute Any Items Due to Availability, Cost and Quality. We Accept Food Stamps (EBT). Angel Food Ministries is an equal opportunity provider and employer. Complaints of discrimination should be sent to USDA, Director, Office of Civil Rights, Washington, DC 20250-9410

**Orders Due/Distribution Day:** Contact Your Local Host Site

\*Please contact your local host site for information or visit our website to locate a host site near you [www.angelfoodministries.com](http://www.angelfoodministries.com)



information@adultdaycarelv.org

Dedicated to Community Living with Independence  
and Dignity

*Adult Day Care* *Center of Las Vegas*  
*Lied/Sinai Senior Care Campus*

# FREE SUPPORT GROUPS



For those caring for someone suffering from  
Alzheimer's disease or other Dementia

Monthly - 1st Wednesday (5:30-6:30pm)  
2<sup>nd</sup> Wednesday (10:00-11:00am)

*Hosted by:*

**Adult Day Care Center of Las Vegas**  
901 N. Jones Blvd., Las Vegas, NV 89108

*Group Leader:*

**Diane Hart, LCSW**

## SUPPORT - LEARN - GROW

### Call 648-3425 to RSVP

\*FREE Supervision for your loved-one while you attend the Support Group

[www.adultdaycarelv.org](http://www.adultdaycarelv.org)

*Adult Day Care Center of Las Vegas*  
901 N. Jones Boulevard  
Las Vegas, NV 89108  
702.648.3425  
Fax: 702.648.1408



*Adult Day Care Center of Henderson*  
1201 Nevada State Drive  
Henderson, NV 89002  
702.368.2273  
Fax: 702.243.2273

# SUPER SATURDAYS!



**JUST A REMINDER:**  
**THE ADULT DAYCARE CENTER OF LAS VEGAS**  
**WILL BE OPEN ON ALL SATURDAYS IN THE**  
**MONTH OF MAY: HOURS WILL BE 8:00AM – 6:00PM.**  
**YOU WON'T WANT TO MISS OUT! SO PLEASE**  
**RESERVE YOUR SPOT TODAY WITH JENNIFER,**  
**DEE DEE OR MARISELA!!**

**~Thank You,  
Staff at Adult Day Care Center of LV**